



BLACK FP Gaming Mouse with Fingerprint Security

**Win 7,8,10 Command Center Software and Win 8.1&10
Security Center Installation Guide**



Table of Contents

Win 10 | Win 8.1 Installation

Installing the Command Center Software.....2

 Registering your fingerprint:.....2

 Deleting your registered fingerprint from the Command Center software4

Win 8.1 & 10 Security Center Installation

Installing the Security Center Software for Windows 107

 Selecting Your Security Center.....7

 Selecting PIN Method:8

 Selecting Password Method:9

 Selecting Fingerprint Reader Method:.....10

Deleting your fingerprint registration data.....12

 Deleting from the Security Center software12

Registering Website Credentials in Security Center14

 Registering Website Accounts14

Deleting your Security Center Account17

File and Folder Encryption18

Accessing Encrypted Files & Folder21

Win 7 Installation

Command Center Software Installation23

Removing your fingerprint data26

[Win 10 | Win 8.1 Installation](#)

Installing the Command Center Software

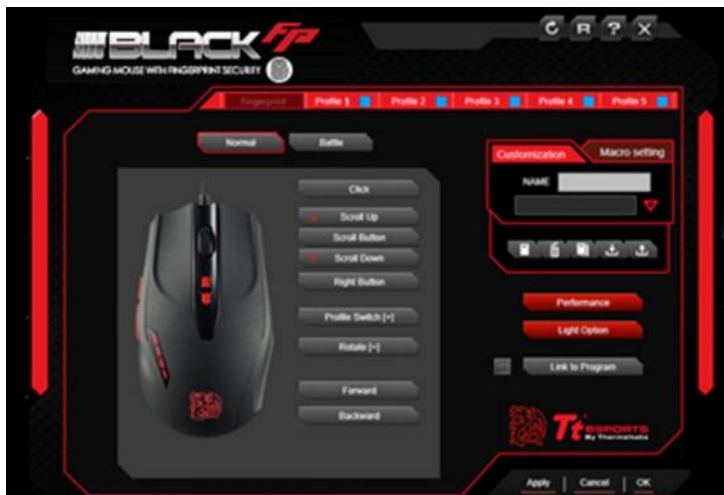
1. Visit the product page and download the latest Command Center software.
2. Follow the onscreen prompt to complete installation.
3. Restart you PC.
4. From the system tray, select the Tt eSPORTS Command Center icon to enter software.

Registering your fingerprint:

[STEP 1]

Once loaded, move your mouse cursor to the tab box named 'Fingerprint' to begin registering your fingerprint with the BLACK FP.

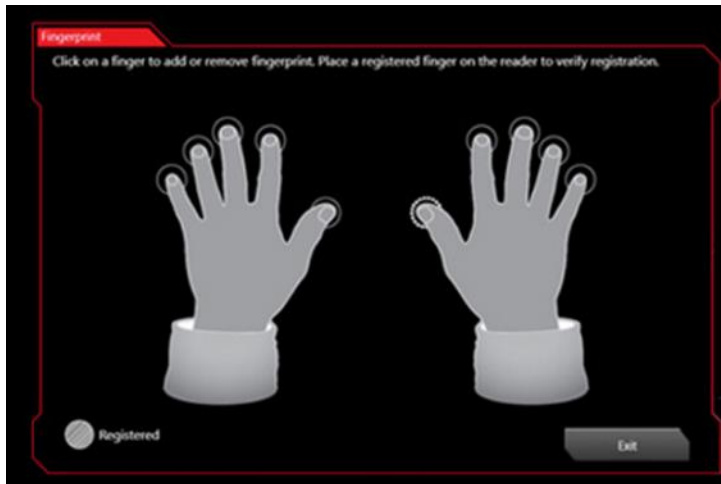
Note: first time registration requires entry of Windows password.



[STEP 2]

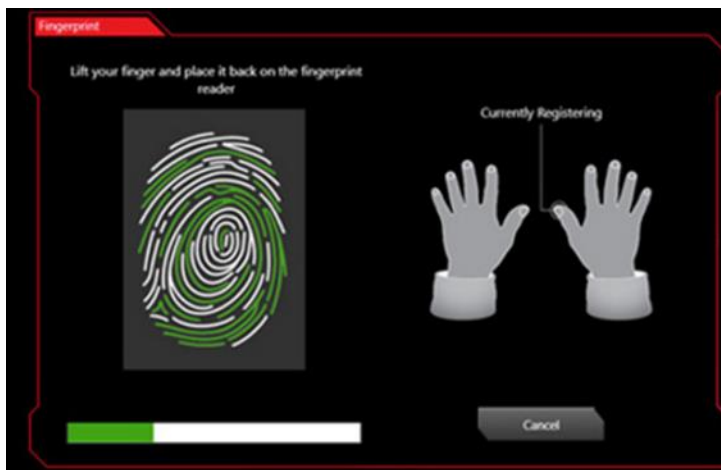
Select desired fingerprint for registration.

Note: a maximum of 10 fingerprints can be set at a time

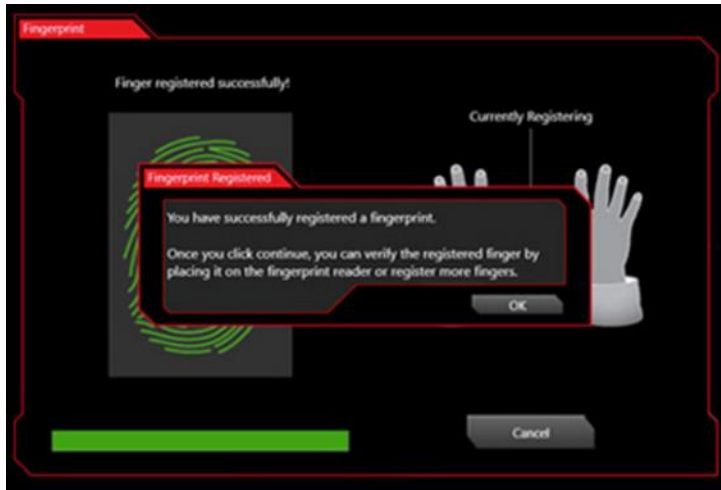
**[STEP 3]**

Place selected finger on the fingerprint sensor of the BLACK FP and lift and rest repeatedly.

Note: if registration of fingerprint fails, please reattempt the process again until successful.

**[STEP 4]**

Upon successful registration of your fingerprint, a message notification will pop up to notify that the registration has now been successfully completed.

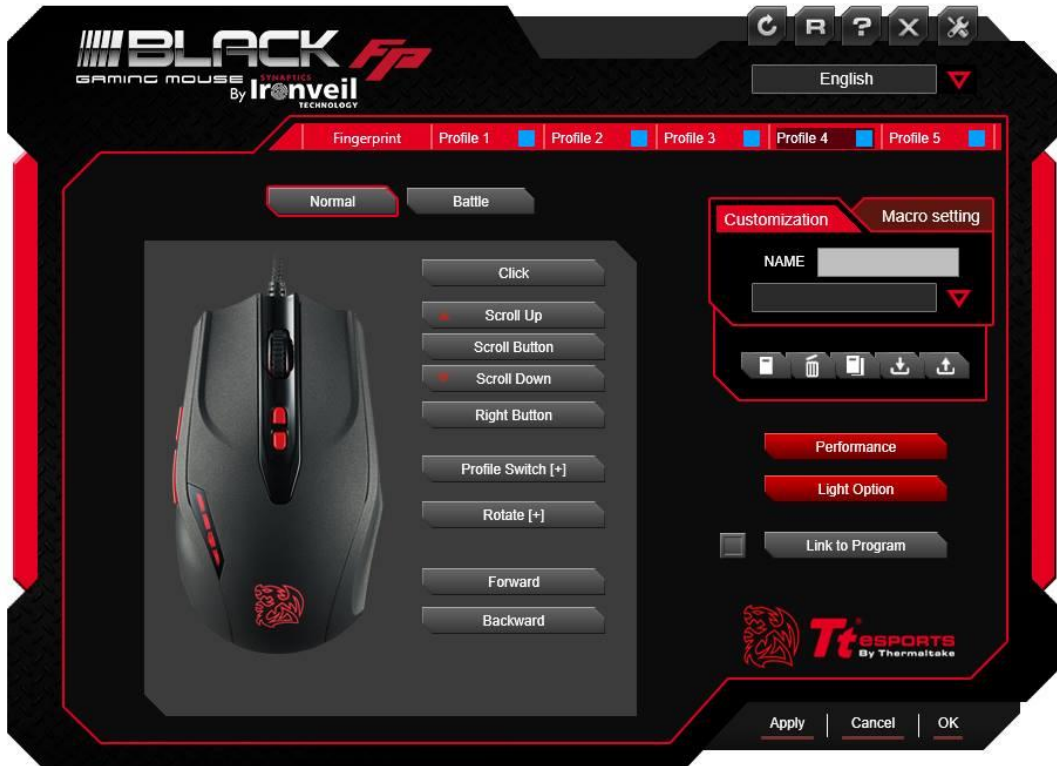


Note: WIN 10 users may also do a quick test by pressing the shortcut Windows Key + L for quick logout to confirm registration success.

***It is recommended that you register your fingerprint using the Command Center software first**

Deleting your registered fingerprint from the Command Center software

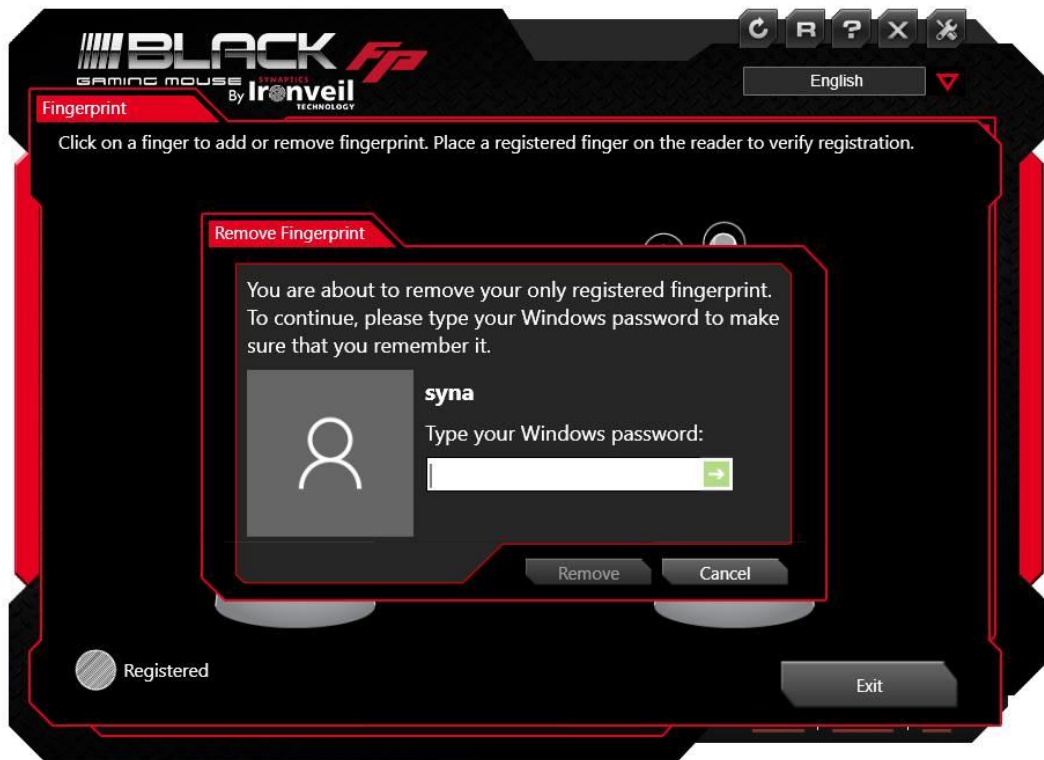
1. Open the Command Center and select "Fingerprint"



2. Follow the onscreen prompts and enter the fingerprint registration section



3. Select the fingerprint you wish to delete and then press 'Remove'
 Note: removal of only registered fingerprint will require your Windows password as confirmation.

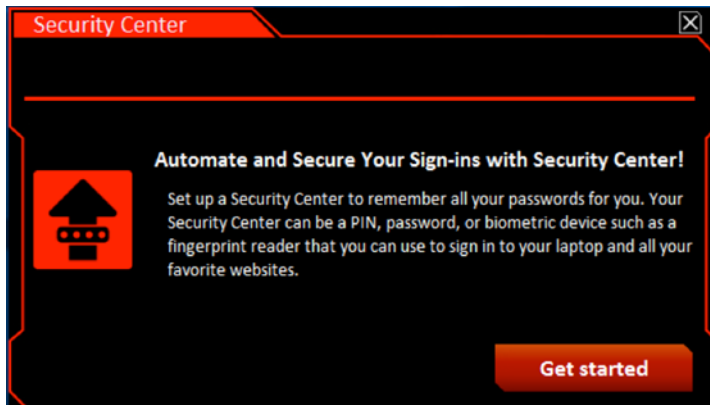


Note: If you have not removed your fingerprint registration data before you uninstall the Security Center and/or Command Center software, please refer to 'Deleting fingerprint identification from your windows system' in the appendix section.

[Win 8.1 & 10 Security Center Installation](#)

Installing the Security Center Software for Windows 8.1 & 10

- Windows 8.1 & 10 login
- Website login
- File and folder encryption



1. Visit the product page and download the latest Security Center software.
2. Follow the onscreen prompt to complete installation (**Chrome users will be prompted to install a 'Chrome Extension' in order to use the full security center features.**)
3. Restart your PC.
4. Upon restart an automatic screen will pop up to register your security preferences.
5. If not, at the start screen, type security center, and then select security center to open the application
6. Click the 'Get Started' button

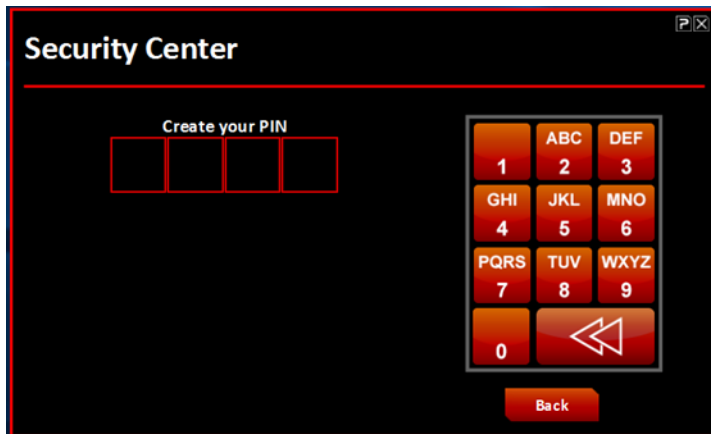
Selecting Your Security Center

Select a Security Center method (PIN, password, or fingerprint reader) for logging on to Windows and your password-protected website accounts, and then click Next.

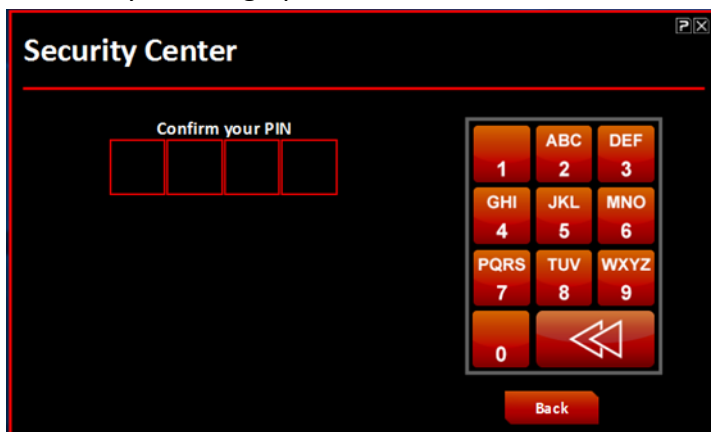


Selecting PIN Method:

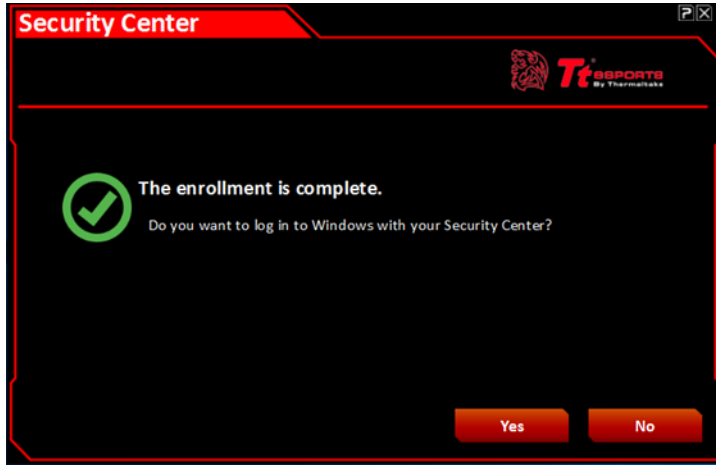
Enter your desired 4-digit pin



Re-enter your 4-digit pin to confirm

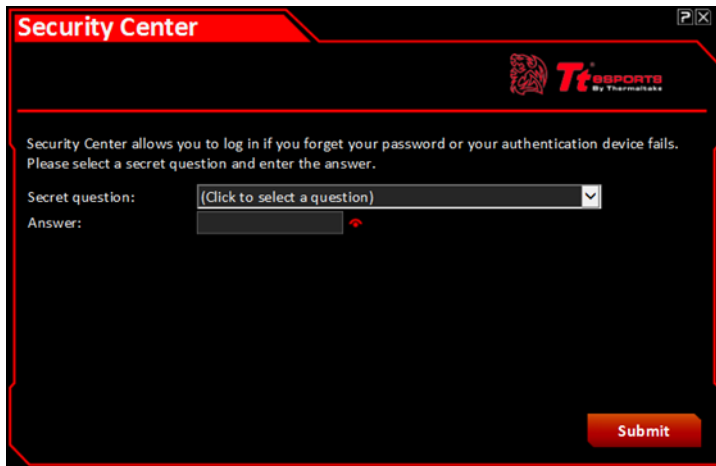


Pin registration successful

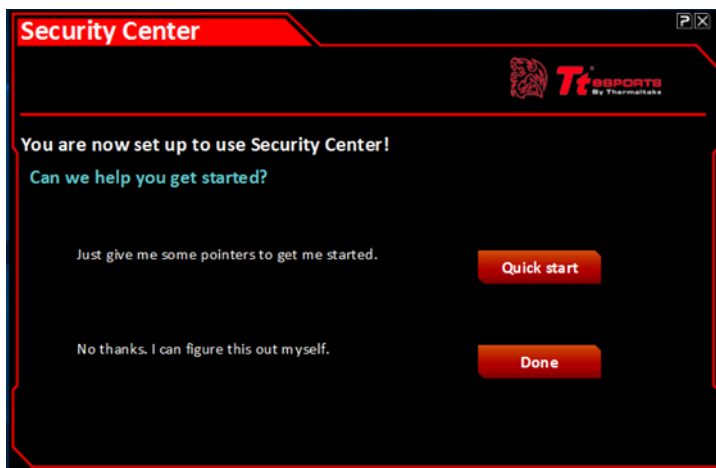


Selecting Password Method:

Select desired secret question and enter desired answer and click submit.



Password registration completed.

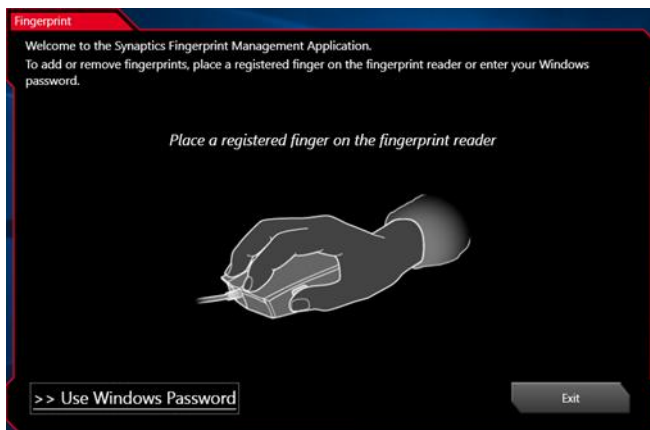


Selecting Fingerprint Reader Method:

Select setup my fingerprint reader.



For first time registration selects 'Use Windows Password' to enter.



Enter your current windows password.

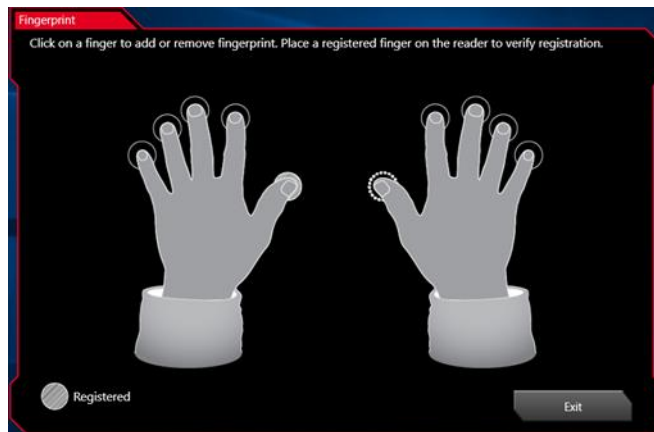


If fingerprint has been previously registered with the Command Center software, press exit.

Note: one fingerprint can only be registered to one account. If a fingerprint is already registered to another account, a popup message will appear to inform you to register



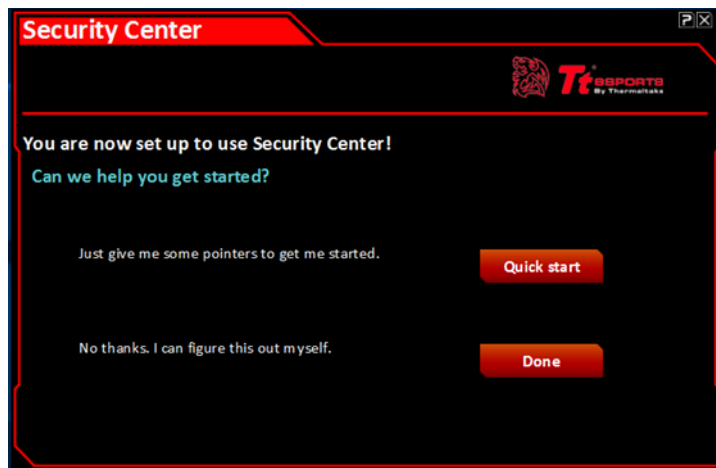
another.



It is recommended that you register more than one fingerprint, if not, simply select 'yes' to exit.



Registration is complete





Deleting your fingerprint registration data

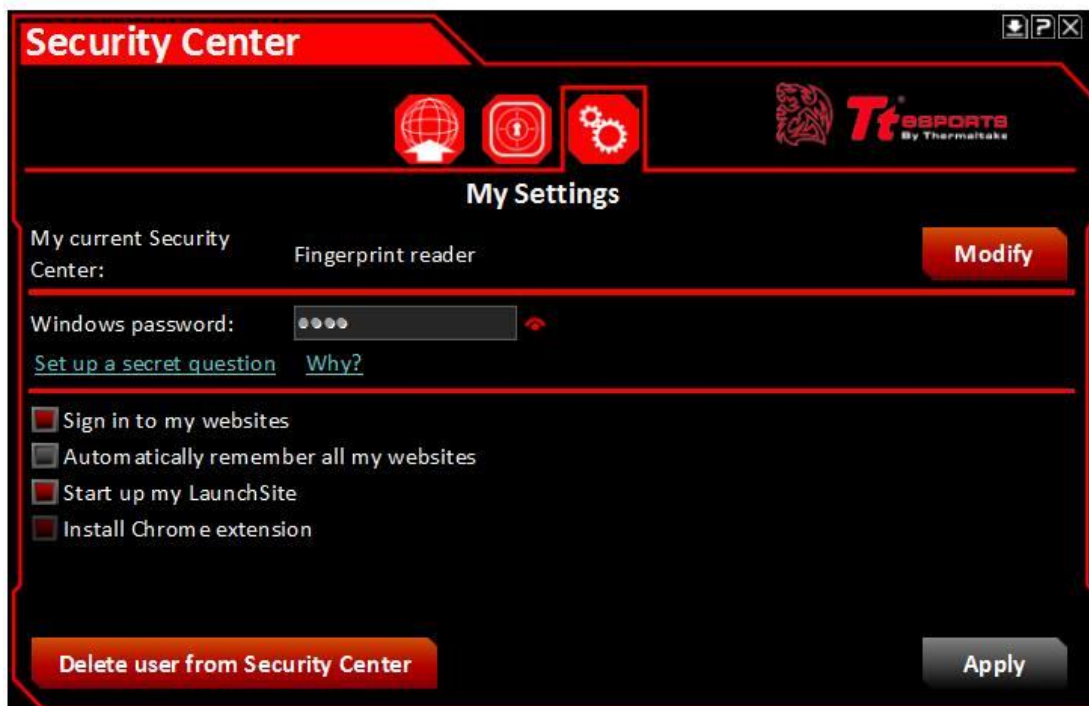
To delete your registered fingerprint, please follow these steps:

Deleting from the Security Center software

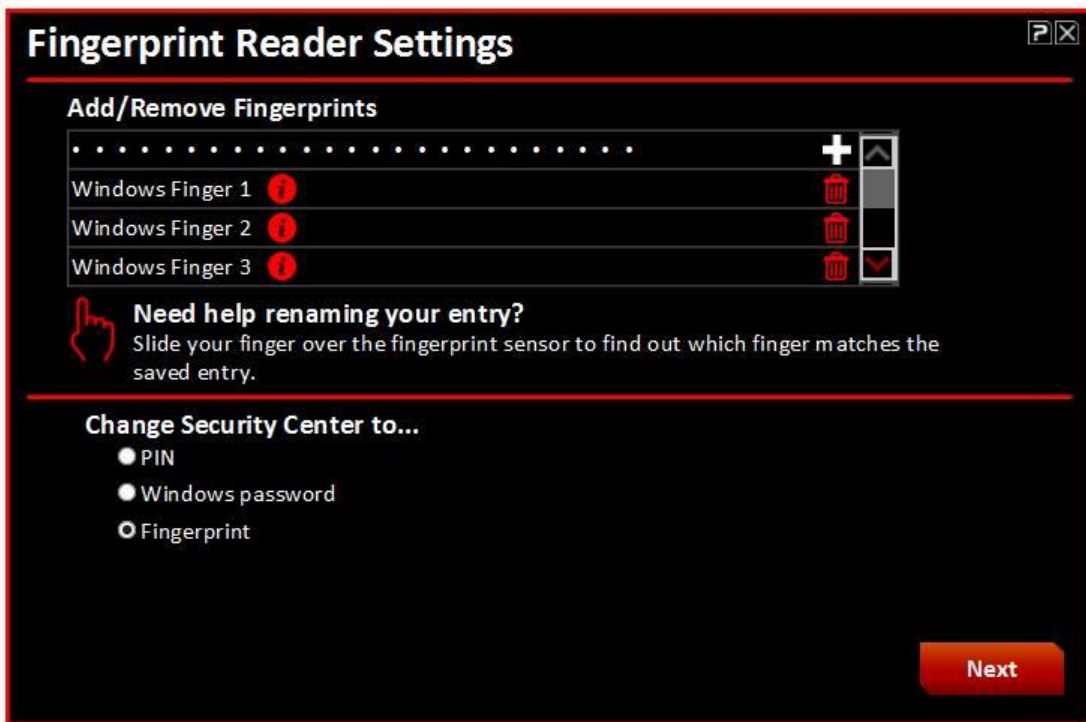
1. Open the Security Center and enter "Set up my fingerprint reader"



2. Go to "My Settings" and select "Modify."



3. Select the fingerprint you wish to delete and press the 'trash can' icon.





Registering Website Credentials in Security Center

Instantly open your browser and automatically log on to your password-protected website accounts by registering the website accounts and credentials in the Security Center. Supported browsers include Internet Explorer, Firefox, and Chrome.

Registering a website creates an icon that represents the website account you are registering in Security Center. Registering a website account also securely stores the website name, web address, username, password, and other applicable information associated with the website account in Security Center.

Note: Passwords containing the "+" symbol may not be saved using Security Center.

Registering Website Accounts

Having completed set up of the Security Center, you can register your website accounts.

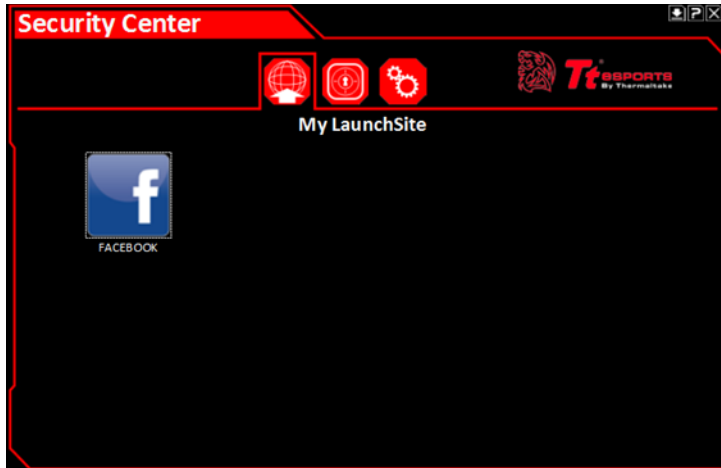
Open a web browser and navigate to a website where you have a password protected account.

Log on with your username and password for the website account.



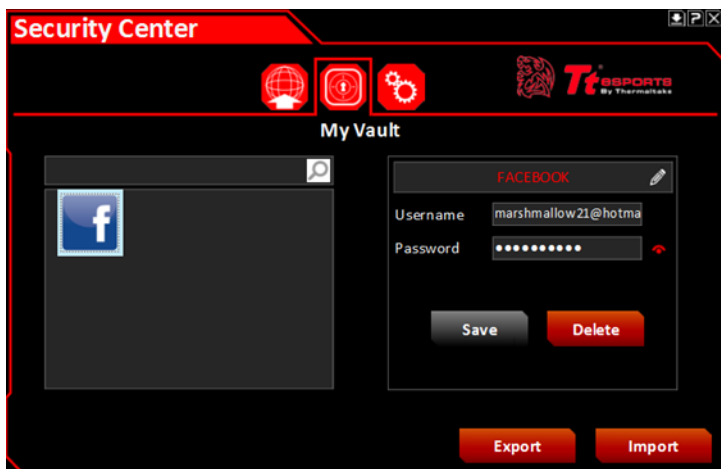
A Security Center screen will display to request 'Remember this password.' Select yes.

My Launchsite records all saved accounts.

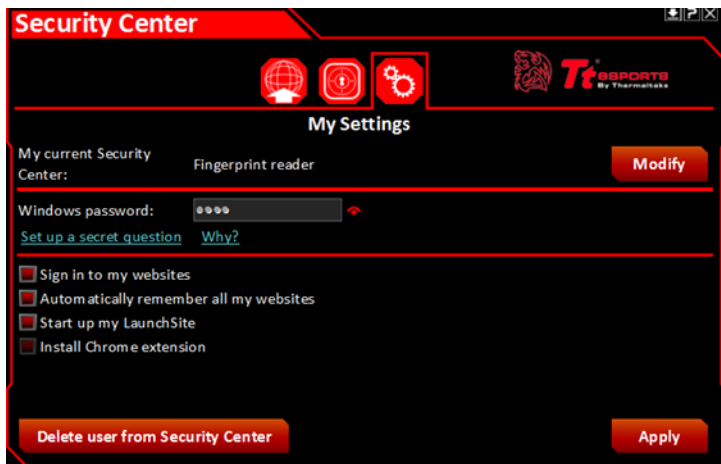


My Vault displays all saved accounts together with usernames and passwords. User also has the option to delete accounts.

Note: If you change one or more of your website passwords, you will also need to update on 'My Vault' by either deleting or reregistering the site or my modifying the password in the text box.



Users have the option for the Security Center to automatically register your other website accounts by simply going to 'My Settings' and clicking 'automatically remember all my websites' In doing so, when a user logs onto their password protected website, the dropdown prompt will no longer show up asking you to remember your password. It will be automatically saved.



Note: Users can also change the 'Current Security Center' method by selecting 'Modify' to switch between pin, password and fingerprint options.



The next time you visit the password protected site, automatic 'Touch to sign in' dropdown box will activate and you simply use your registered fingerprint.



Deleting your Security Center Account

Follow these steps to remove the Security Center:

Caution:

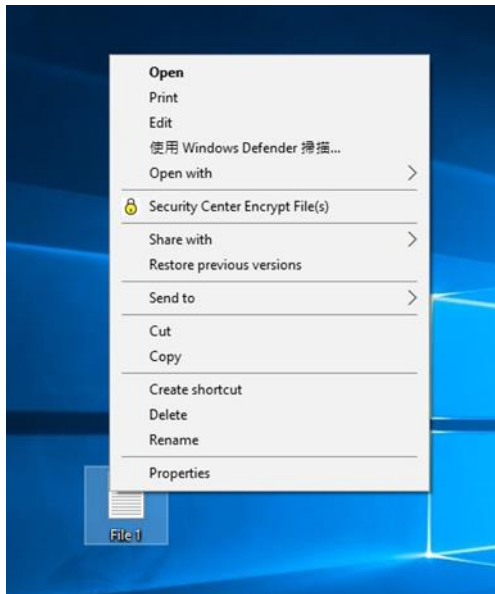
Make sure that you know your Windows User Account password before deleting your Security Center. Once the Security Center is deleted, Windows requires your Windows User Account password to unlock the computer. Deleting your Security Center also deletes your Security Center Settings, registered websites, and website account logon information.

1. Click the Security Center icon in the desktop taskbar, then log on using your PIN, password, or fingerprint.
2. Click the My Settings icon to open the My Settings screen, and then click Delete.
3. Click Confirm

Your Security Center account is now deleted. You can set up a new Security Center account by following the steps in [Setting up Security Center](#).

File and Folder Encryption

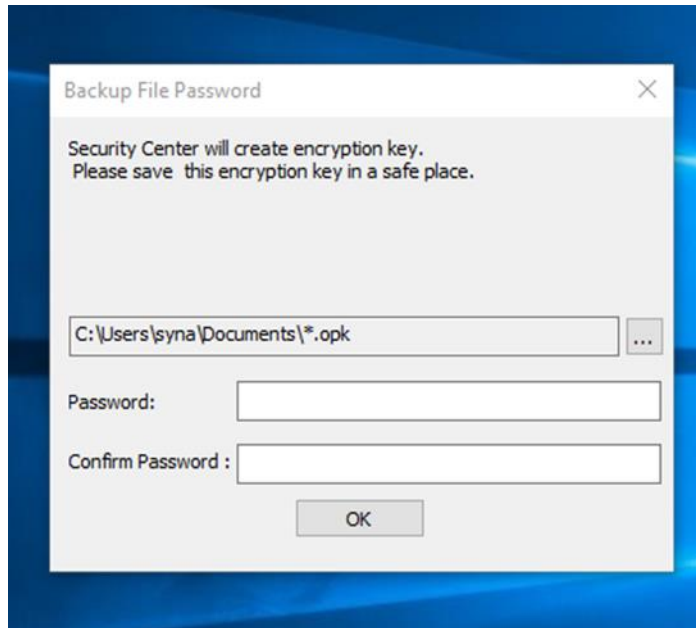
To encrypt a file or folder, simply select the desired file/folder and right click.



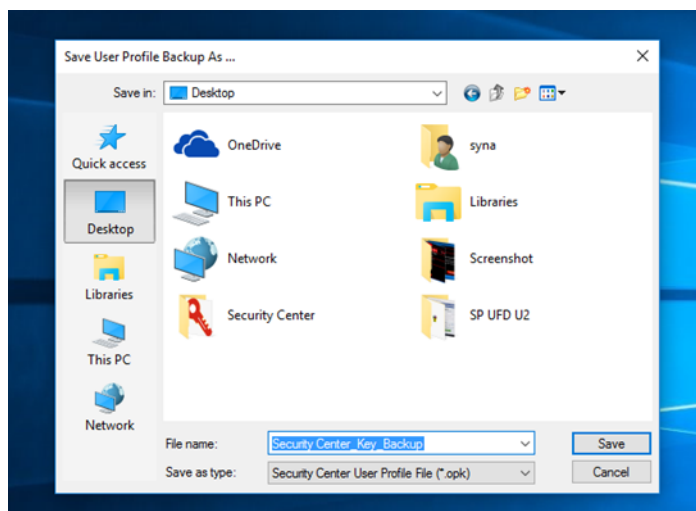
From the dropdown menu, select 'Security Center Encrypt File(s)' which will bring up the authentication method selected originally.



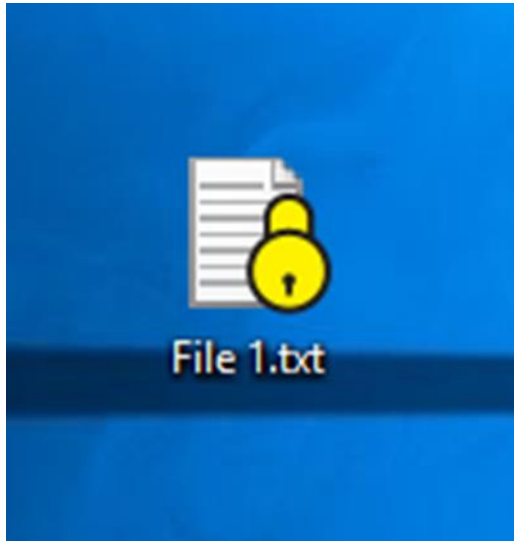
Depending on the security method you choose earlier, user must confirm encryption by either pin, password or fingerprint reader method. Once confirmed, user will then be asked to input a 'Backup File Password' just in case user is unable to access file via the original method.



Save the backup security key file to desired location.

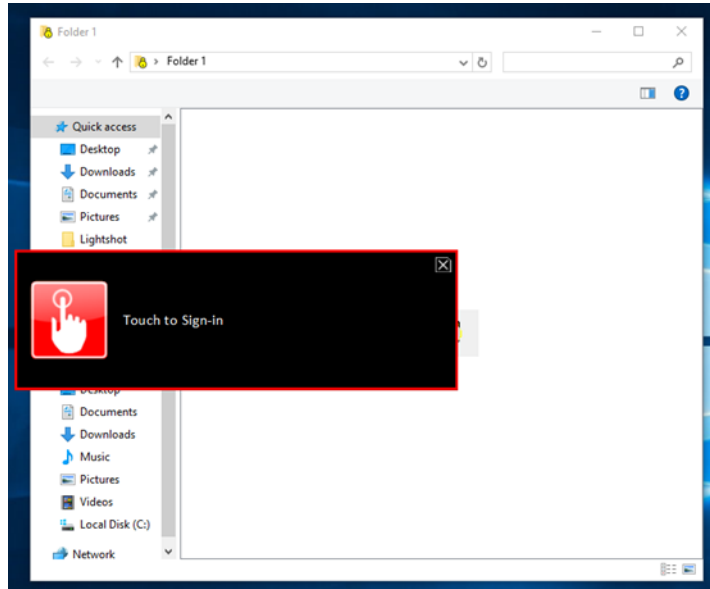


The file/folder encryption process will begin and once completed, your file or folder will display a padlock icon indicating that the file is now secure,

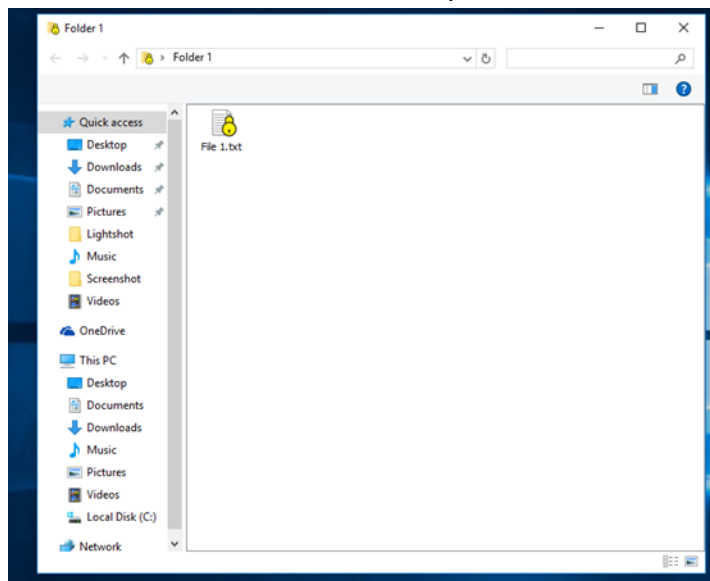


Accessing Encrypted Files & Folder

Simply double click on the encrypted file or folder where you will be prompted for authentication.



Once authentication is successful you will have access.



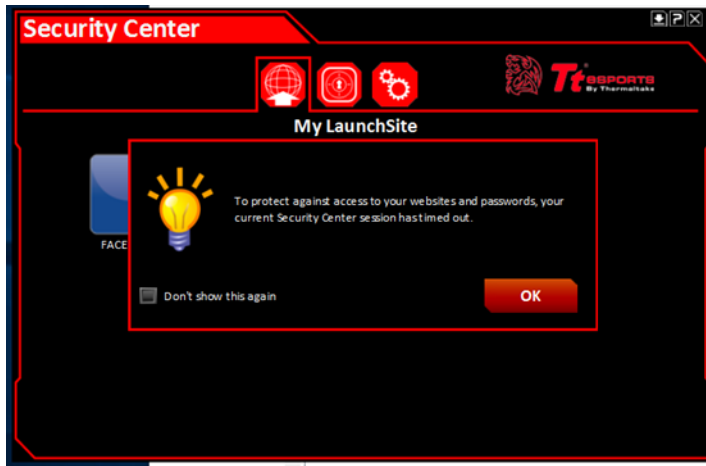
Note 1: Files in protected folders can be edited without the need to reapply password protection. Simply double click the file in the folder for access.

Note 2: If the file is moved outside of the protected folder, such as the Desktop, the file will need to be re-protected again.

If the Security Center is left open and idle for over 1 minute, the session will automatically expire and as a security precaution, you will be required to login again



with your authentication.



Win 7 Installation

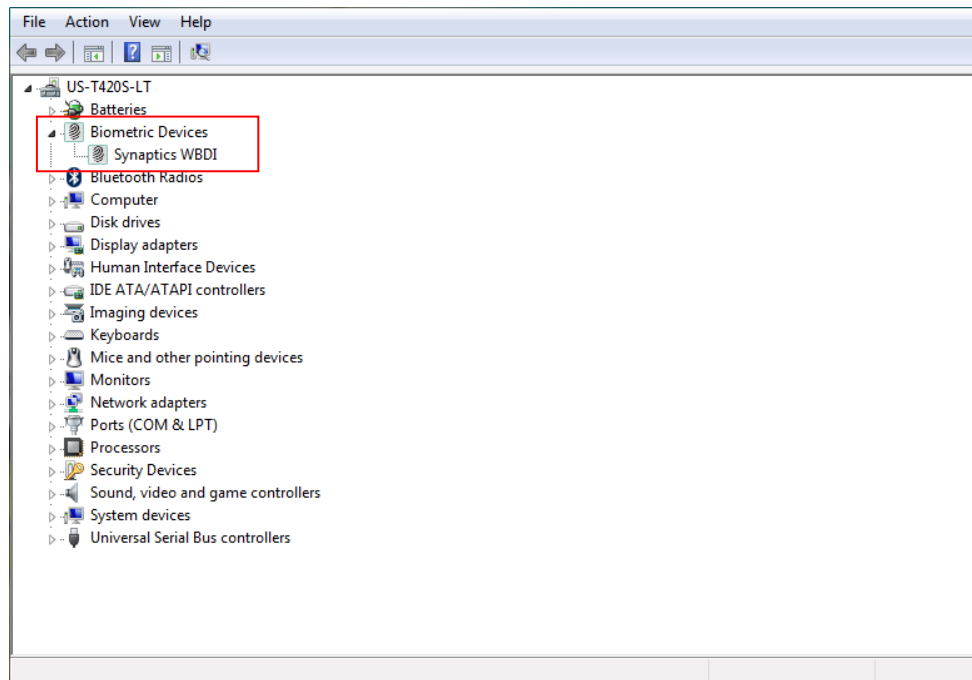
Command Center Software Installation

NOTE:

1. In order to use the BLACK FP gaming mouse for WIN7, you must create a new administrator user account on your system and use that specific account with the BLACK FP gaming mouse.
2. Compatible with Windows 7 Service Pack 1, Windows Server 2008 R2 Service Pack 1

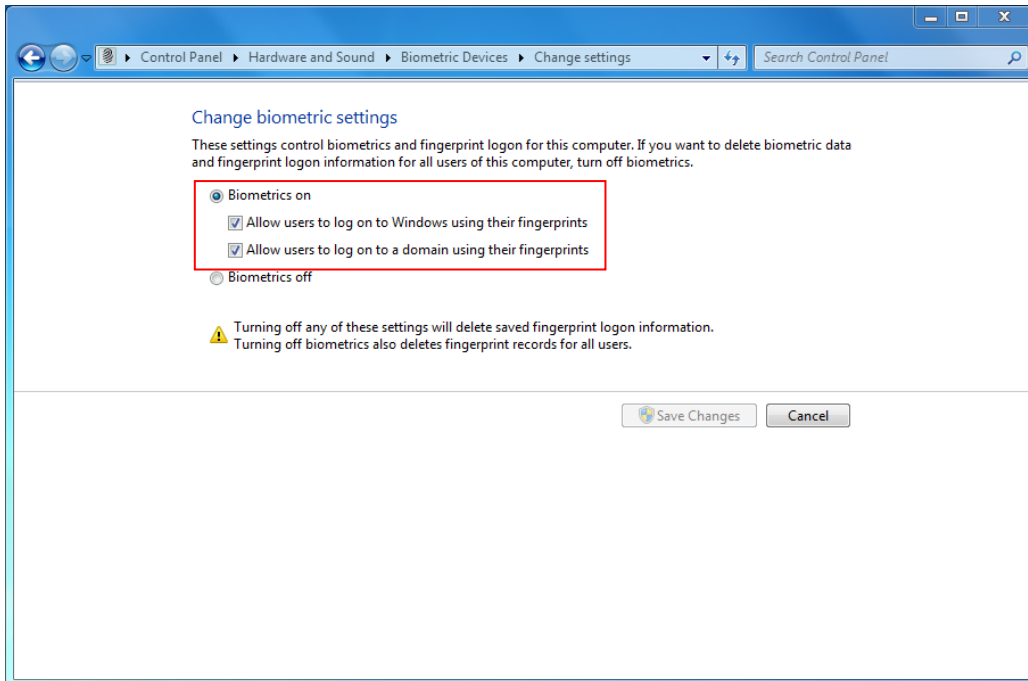
1. Checking installation of biometric device success

After downloading and installing the Commander Center software, please open your device manager to check if the biometric device has been installed successfully.



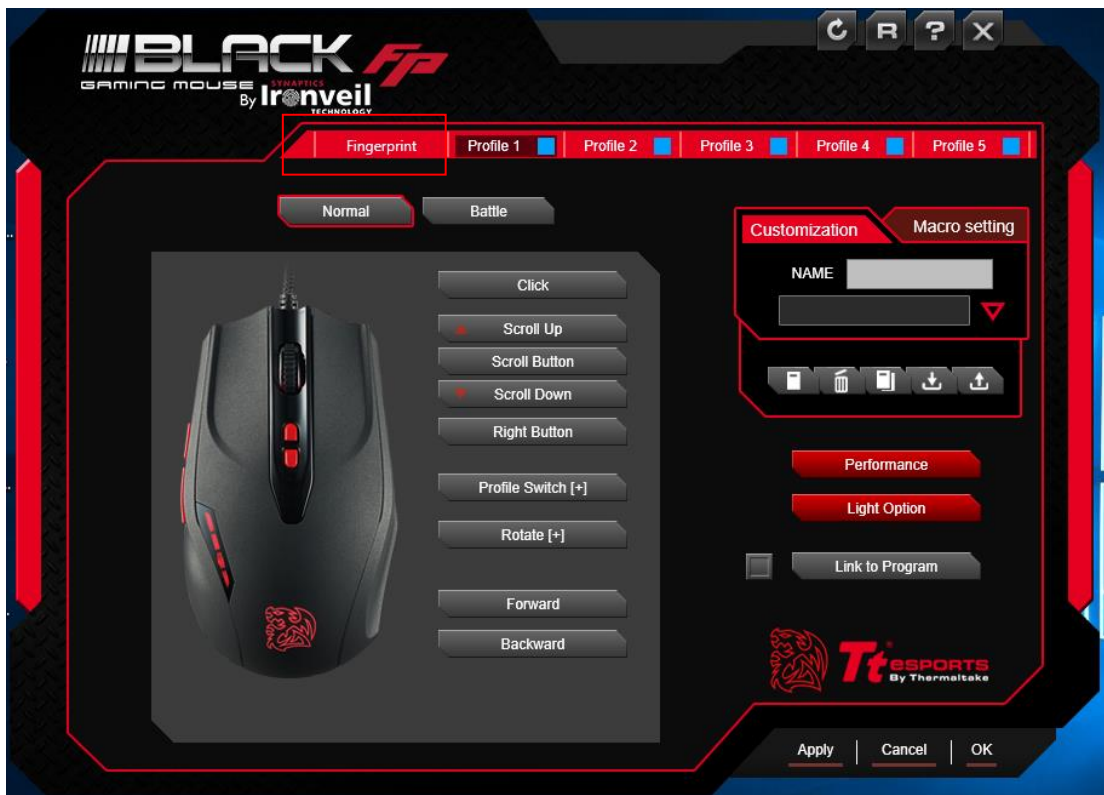
2. Setting up the biometric device for system login.

After setting up the device, please go to \Control Panel\Hardware and Sound\Biometric Devices\Change Settings and select "Biometrics on" in order to login to Windows 7 with the biometric fingerprint sensor.

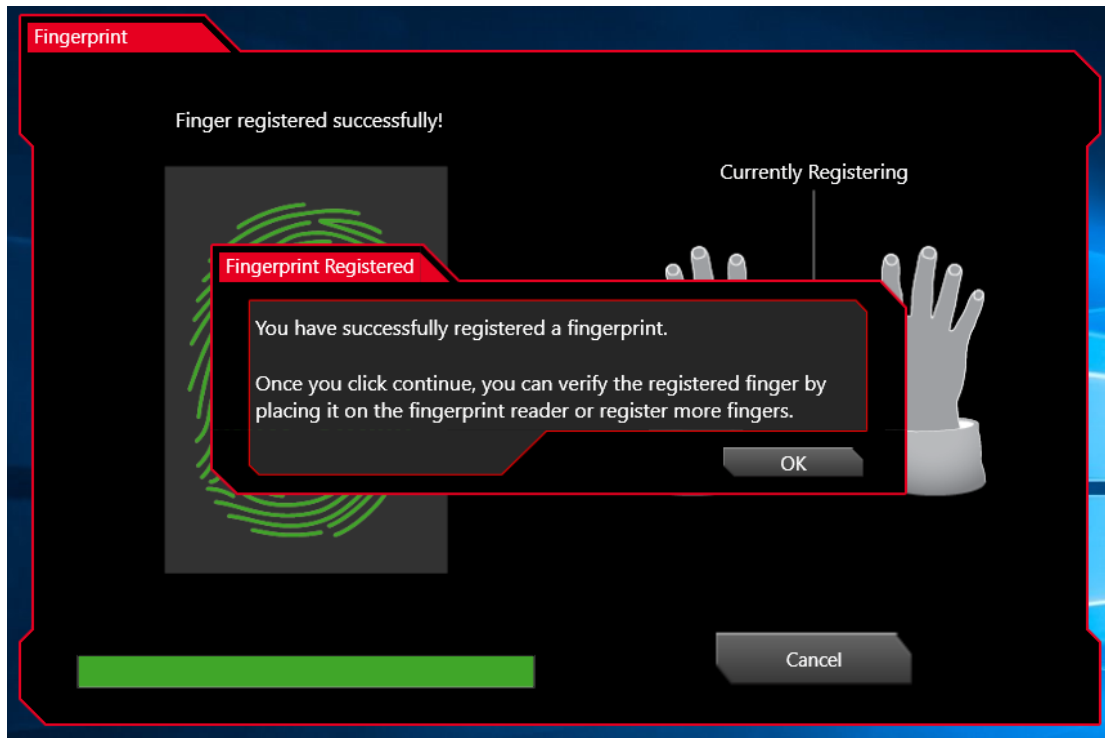


3. Using the Commander Center to set up your fingerprint login

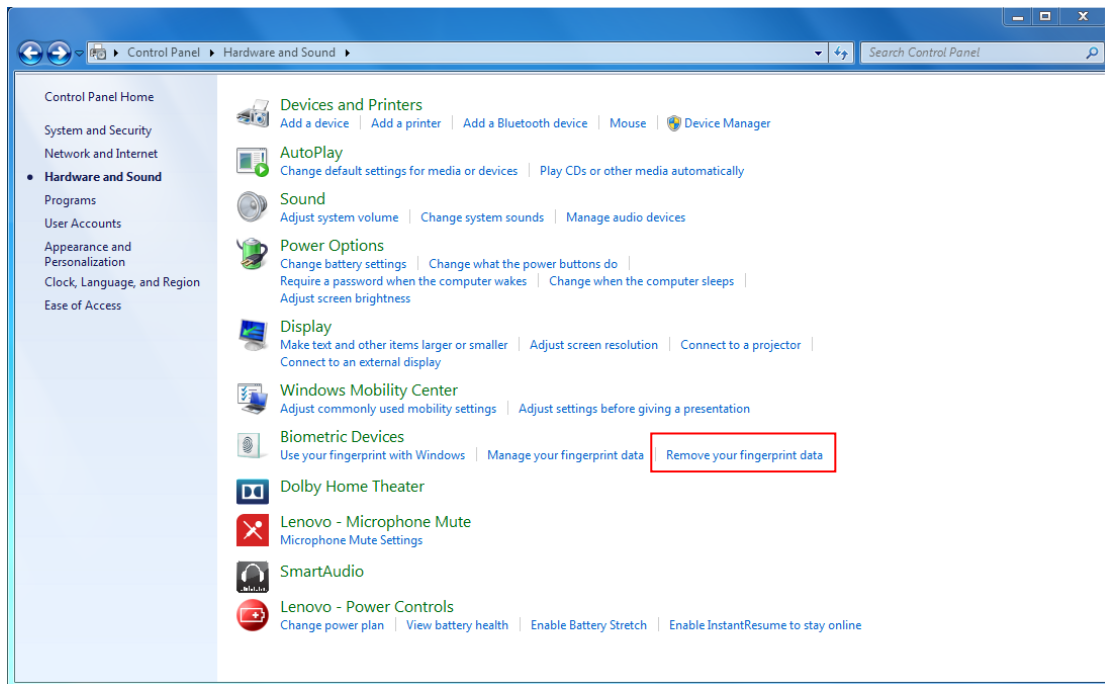
Enter the Commander Center software and follow the onscreen prompts to complete the installation.



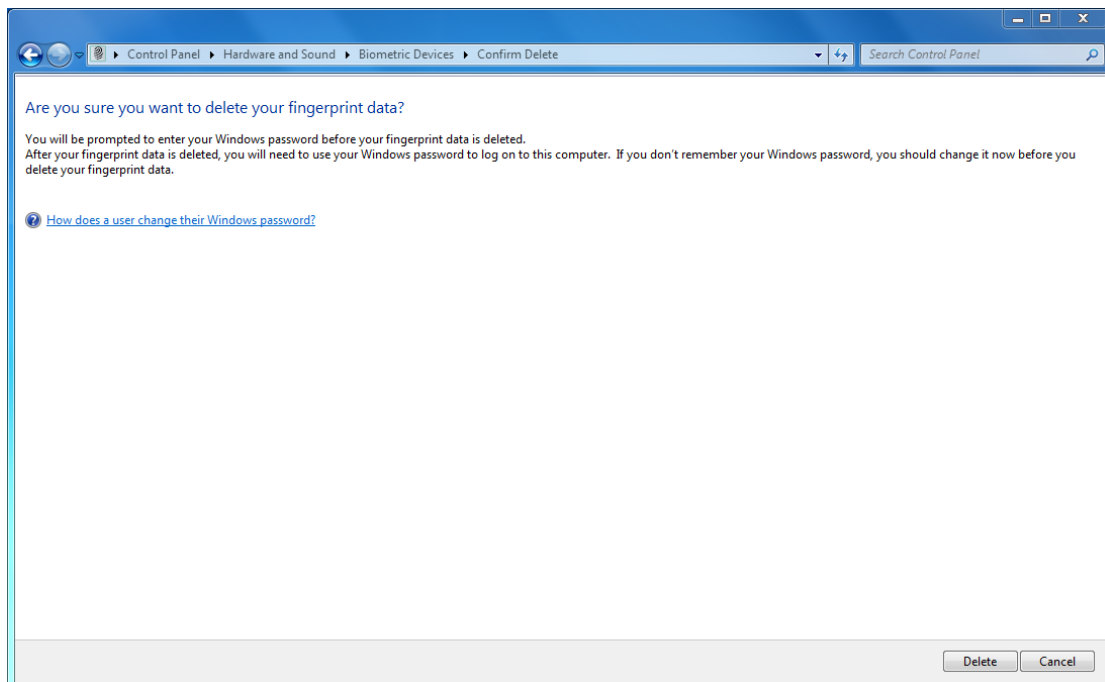
After completing the process and restarting your computer, you can login to WIN 7 with the biometric fingerprint sensor.



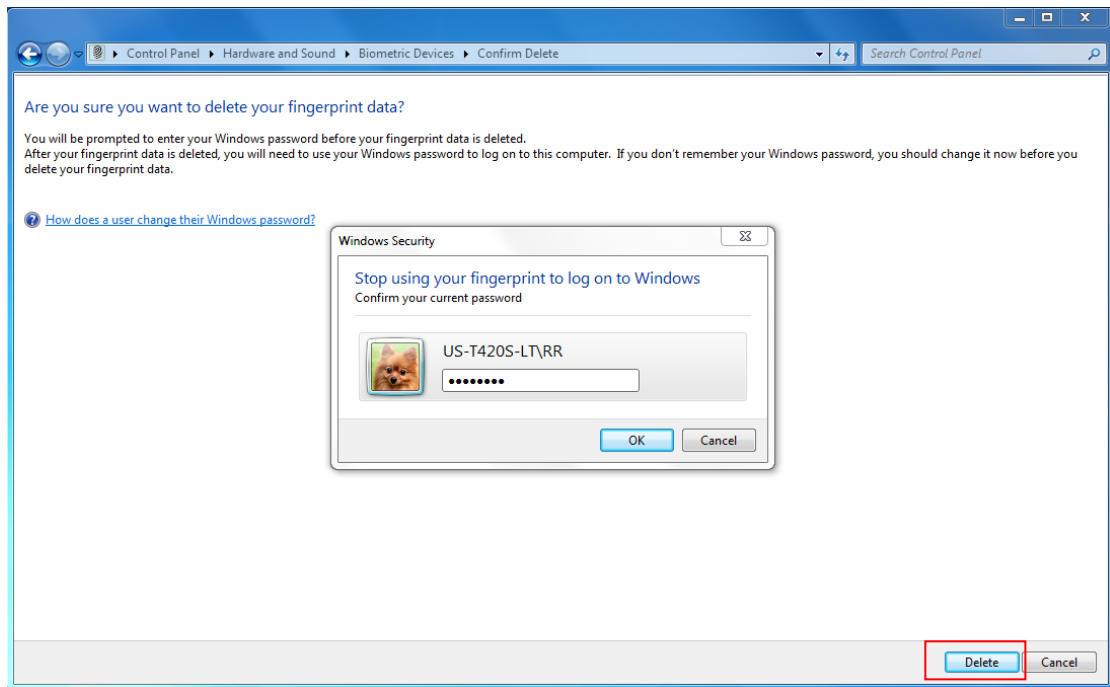
Removing your fingerprint data



Control Panel - Hardware and Sound – Biometric Devices – Remove your fingerprint data



Click "delete"



Please enter your windows security password and click “ok” to delete your fingerprint data.